



Smithsonian

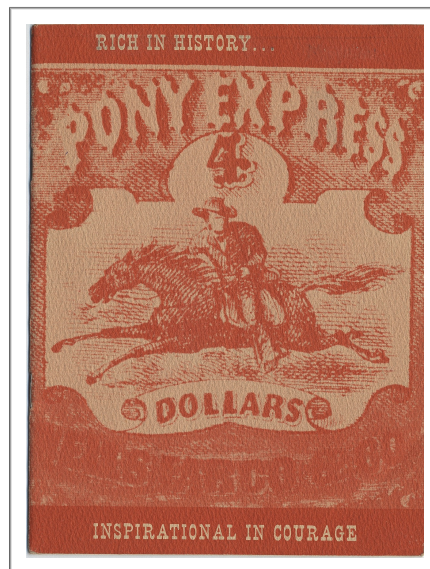
National Museum of American History Kenneth E. Behring Center

Guide to the Railway Express Agency Records

NMAH.AC.0260

Archives Center Staff

2006



Archives Center, National Museum of American History
P.O. Box 37012
Suite 1100, MRC 601
Washington, D.C. 20013-7012
Business Number: Phone: 202-633-3270
Fax Number: Fax: 202-786-2453
archivescenter@si.edu
<https://americanhistory.si.edu/archives>

Table of Contents

Collection Overview	
Administrative Information	1
Biographical / Historical	2
Scope and Contents	2
Arrangement	2
Names and Subjects	
Container Listing	
Series 1: Adams Express Company, 1899-1913	4
Series 2: Railway Express Agency Printed Material, 1914-1965	5
Series 3: Engineering Drawings and Publications, 1898-1952	7
Series 4: Air and Rail Forms, 1954-1964	9
Series 5: Personnel Materials, 1864-1879	10
Series 6: Schedules and Routes, 1929-1967	12
Series 7: Rates, Rules, and Regulations, 1860-1962	14
Series 8: Notebook—Bulletins and Circulars, 1929-1958	16
Series 9: Drawings, 1873-1970	17

Collection Overview

Repository:	Archives Center, National Museum of American History
Title:	Railway Express Agency Records
Date:	1860-1970
Identifier:	NMAH.AC.0260
Creator:	Railway Express Agency. (Author) Karl, Roger F. R. (Donor)
Source:	Mechanical and Civil Engineering, Division of (Collector)
Extent:	3 Cubic feet (10 boxes, 7 map-folders)
Language:	English .
Summary:	Records of to Railway Express Agency, Inc., a shipping operations company.

Administrative Information

Acquisition Information

Gift from Roger F.R. Karl, consulting engineer.

Provenance

Collection transferred to the Archives Center from the Division of Mechanical and Civil Engineering (now Division of Work and Industry), date unknown.

Processing Information

Archives Center staff, 2006.

Preferred Citation

Railway Express Agency Records, Archives Center, National Museum of American History

Restrictions

Collection is open for research but is stored off-site and special arrangements must be made to work with it. Contact the Archives Center for information at archivescenter@si.edu or 202-633-3270.

Conditions Governing Use

Collection items available for reproduction, but the Archives Center makes no guarantees concerning copyright restrictions. Other intellectual property rights may apply. Archives Center cost-recovery and use fees may apply when requesting reproductions.

Biographical / Historical

In 1860 there were three principal transcontinental mail and express routes: By ship from New York to Panama then by portage across the Isthmus to the West Coast and finally back to sea for the last leg to San Francisco; Second, the Butterfield and Fargo Stageline operating from St. Louis through the Indian Territory along the Santa Fe Trail and up to Los Angeles to San Francisco; and third the stageline of Russell, Majors, and Waddell, which traveled from Ft. Leavenworth, Kansas to Denver, then over the mountains to Salt Lake City and California terminating in San Francisco. Early in 1860 the Pony Express concept was formed and operated from St. Joseph, Missouri to Sacramento, California. The end of the Pony Express came in 1861 when the telegraph line connected Omaha and San Francisco and officially ended on October 26, 1861.

On November 1, 1866, Wells Fargo & Co. purchased the stage and Pony Express operations from Ben Holladay. At this time there were several express companies; however, by 1914 there were only seven. During World War I these seven companies were consolidated at the direction of the Federal Government into one nationwide organization, the American Railway Express Agency. In 1929 the nations railroads bought the express business and changed the name to Railway Express Agency, Inc. In November 1960, REA Express was adopted as the Company's trade name. In October 1960, they acquired Fast Service Shipping Terminals Inc. In January 1961, formed REA Leasing Corp a trailer leasing company. In February 1965 formed with Seven Arts Associated Corp. and Travel Theaters Inc. REA Express Seven Arts Transvision, Inc. In 1965, they sold 32 terminals and leased them back. In April 1967, REA Express Canada, Ltd., was formed. In May 1967, Rexco Supply Corp. formed to conduct tire recapping and automotive parts distribution business. In February 1970, The Express Co. Inc. was founded as a subsidiary of REA Holding Corp to conduct an international air freight forwarding business.

On February 21, 1975, the Company filed a petition under Chapter XI of the Bankruptcy Act in Federal Court in New York County listing assets of \$41,000,000 and liabilities of \$55,000,000. Company said the reasons for the petition included losses created by years of railroad domination as well as high rate of inflation, a recent decline in express shipments, and limited availability of credit.

Scope and Contents

Mainly forms, manuals, federal regulations, accounting instructions, and personnel materials. Included are labor agreements, an employee handbook, and information on the employees' sick benefit association. Other materials include drawings of property owned; and photographs, engineering drawings, technical publications relating to railroad passenger car brake equipment; also a public relations publication, "The Pony Express Story."

Arrangement

The collection is arranged into eight series.

Series 1, Adams Express Company, 1899-1913

Series 2, Railway Express Agency Printed Material, 1914-1965

Series 3, Engineering drawings and publications, 1898-1952

Series 4, Air and Mail Forms, 1954-1964

Series 5, Personnel materials, 1864-1879

Series 6, Schedules and routes, 1929-1967

Series 7, Rates, Rules, and Regulations, 1860-1962

Series 8, Notebook--Bulletins and Circulars, 1929-1958

Series 9, Drawings, 1873-1970

Names and Subject Terms

This collection is indexed in the online catalog of the Smithsonian Institution under the following terms:

Subjects:

- Blueprints
- Pony express
- Railroads -- Brakes
- Railroads -- Freight
- Transportation

Names:

- Adams Express Company
- American Railway Express Agency
- Mechanical and Civil Engineering, Division of
- REA Express

Container Listing

Series 1: Adams Express Company, 1899-1913

Box 1, Folder 1	Inward Way Bill and Delivery Book, April 28, 1899 to March 4, 1900
-----------------	--

Box 1, Folder 1	Operating Expenses, July December 1912; July and August 1913
-----------------	--

[Return to Table of Contents](#)

Series 2: Railway Express Agency Printed Material, 1914-1965

Box 1, Folder 1	D. A. McCarthy, American Railway Express Company, Agent, Erie Terminal, Jersey City, New Jersey, Register of Money, Valuables, etc., June 11, 1923 to October 2, 1923.
Box 1, Folder 1	Operating Expenses Accounts, Uniform System of Accounts for Express Companies Prescribed by the Interstate Commerce Commission (ICC), May 28, 1914
Box 1, Folder 1	Instructions Covering Uniform System of Stamping Delivery Sheets; Joint Circular Accounting Division No. 77 E., October 1, 1959
Box 1, Folder 1	Railway Express Agency, Incorporated By-Laws, April 6, 1960
Box 1, Folder 1	REA Express "List of Salaried Offices" Issue, November, 1968
Box 1, Folder 2	"Uniform System of Accounts for Express Companies prescribed by ICC," effective July 1, 1914
Box 1, Folder 2	Interpretations of Classifications Embodied in the Uniform System of Accounts for Express Companies Prescribed by the Interstate Commerce Commission (ICC), Accounting Bulletin No.13. (Two copies), effective January 1, 1917
Box 1, Folder 2	Railway Express Agency "Instructions Governing Receipting Practices, Preparations of Delivery Sheets, and Assessment and Revision of Charges," issued January 1, 1951
Box 1, Folder 2	Railway Express Agency Instructions, February 1, 1951 Notes: Governing: Preparation of Shipments for Delivery, Preparation of Charge out Forms, Charging Out Shipments to Deliverymen, Carry Over of Undelivered Shipments, Accepting Deliverymen's Settlements, Preparing Remittance and Paid C.O.D. Reports, and Preparing Recapitulation of Deliverymen's Settlements
Box 1, Folder 2	"Here's How To Process International Shipments Step by Step," REA Express International Department, circa 1961
Box 1, Folder 2	"REA Leasing Corporation, National Railroad Trailer Pool Manual of Operations," issue No. 3, April 1, 1964
Box 1, Folder 2	"The Pony Express Story," REA Public Relations & Adv. Division, April 3, 1860-October 26, 1861
Box 1, Folder 2	Pony Express Story [booklet], 1930-1960 1 Item (Ink on paper.; 7.4" x 5.5") Collector: Karl, Roger F. R. Language: English.

	Notes: AC0260-0000001 (AC scan no.)
	Topic: Pony express
	Genre/Form: Booklets
Box 1, Folder 3	Railway Express Agency "General Rules and Instructions," New York, July 1, 1948
Box 1, Folder 4	Air Express Loss and Damage Claims, January 11, 1961
Box 1, Folder 4	Claim Payments Air Rail International, 1959 - 1963
Box 1, Folder 5	Miscellaneous Notes, 1956 - 1965

[Return to Table of Contents](#)

Series 3: Engineering Drawings and Publications, 1898-1952

Box 1, Folder 1; Box 7, Folder 10	Report West Side Terminal Building Condition, August 20, 1970
Box 1, Folder 2	Contents of building at 219 E. 42nd Street and miscellaneous drawings and sketches
Box 1, Folder 3	Instruction Pamphlet No. 5050 6, May 1942, "Passenger Car Brake Equipment with D 22 A Control Valve," and Instruction Pamphlet No. 5050, July 7, 1948
Box 1, Folder 4	Description of the Freight and Express Refrigerator Cars of the United States Freight Refrigerators as of July 1, 1926 and Express Refrigerators as of Jan. 1, 1927, July 1, 1926-Jan. 1, 1927
Box 1, Folder 4	"The Effect of Brake Shoe Action on Thermal Cracking and on Failure of Wrought Steel Railway Car Wheels," Bulletin Series No. 387, University of Illinois Engineering Experiment Station, Urbana, Illinois, June 1950
Box 1, Folder 5	Instruction Pamphlet No 5062, December 1942, "The 'AB' Freight Brake Equipment," Westinghouse Air Brake Company, 1945
Box 1, Folder 5	Instruction Pamphlet No. 5062, Sup. 1, March 1947, "'AB 1 B' Freight Brake Equipment," Westinghouse Air Brake Company, 1947
Box 1, Folder 5	Instruction Pamphlet No. 5041 2, "Westinghouse Pneumatic Type 'D' Automatic Slack Adjuster for Freight Cars," Westinghouse Air Brake Company, November 1951
Box 1, Folder 5	Pamphlet: "Describing all types of The Barber Stabilized Truck With Shimming Instructions," issued by Standard Car Truck Company, 1952
Box 1, Folder 5	"Dynamic Capacity of Roller Bearings," Acta Polytechnica, Mechanical Engineering Series Vol. 2 Nr 4, Royal Swedish Academy of Engineering Sciences, Stockholm, Sweden, 1952
Box 1, Folder 5	"SAB Brake Regulator, Type DRV," Pamphlet No 661, American SAB Company, Inc., June 1953
Box 1, Folder 5	"Metallic Steam Heat Connections," Manual and Parts List, Barco Manufacturing Co.
Box 1, Folder 6	Correspondence and related material regarding the demolition of property at Village, Compton, Albion, and Lucas Street, Boston, MS, January 24, 1941 to August 6, 1941

Box 2, Folder 1	Correspondence from Chicago Files parts of years 1898, 1899, and the 1900's, 1898 - 1951 Notes: Correspondence from Richmond, Va. office for parts of years 1921 1922, 1930, and 1931 with respect to the Logan, West Virginia office and other miscellaneous correspondence from offices from the years to 1951. Contains references to the flood conditions at Huntington, West Virginia, 1937, and to the Florida Hurricanes of 1947, 1948, and 1949
Box 2, Folder 2	Properties owned and leased December 31, 1954, and April 30, 1955, December 31, 1954 and April 30, 1955
Box 2, Folder 3	Railway Express Agency, Incorporated, "Building and Contents Schedule, July 1st, 1933, 1937, 1940, 1962, and 1968
Box 2, Folder 4	Black Notebook with floor plans for New York City facilities—a typewritten note by Roger F.R. Karl, P.E. has a summary of the contents and places the date of the material at about 1940, about 1940
Box 10	American Express Company, real estate maps, 1903-1941

[Return to Table of Contents](#)

Series 4: Air and Rail Forms, 1954-1964

Box 3, Folder 1	Green Looseleaf folder of "Air Express Forms," 1954
Box 3, Folder 2	Two brown Looseleaf folders of "Rail Express Forms". One folder with an inside cover "REA Forms Frequently Used," with form numbers from 0 to 992, and another brown folder with numbers from 1000 to 8013, dated September 1945
Box 4, Folder 1	Blank forms such as 98, 99, 129, 650 3005, and 7058. Some looseleaf sheets for notebook with attached forms and stickers for employee work relations, Various dates from March 1929 to August 1955
Box 4, Folder 2	Loose-leaf pages with attached various forms for "Fast Service Shipping Terminals, Inc.", 1955 - 1964
Box 4, Folder 3	Loose-leaf pages of miscellaneous forms including Delivery Sheet, Prepaid and Collect forms, Employee Application for Group Insurance and Dependents Group Hospital Insurance, Receipt for Premium Payment by Absent Employee; many may duplicate forms given in previous folders
Box 4, Folder 4	Miscellaneous forms such as 4 A, 114, 567, 916, and 5016. Includes shipping labels and special Christmas labels
Box 4, Folder 5	Form for "Standard Express Operations Agreement Between and Railway Express Agency, Incorporated, March 1, 1954
Box 4, Folder 5	Form for "Air Express Agreement between Railway Express Agency, Incorporated, August 1, 1954
Box 4, Folder 6	Form for "Standard Express Operations Agreement Between and Railway Express Agency, Incorporated, Effective October 1, 1959

[Return to Table of Contents](#)

Series 5: Personnel Materials, 1864-1879

Box 5, Folder 1	Employee Bulletin "Free Enterprise—You, Your Job, Your Company"
Box 5, Folder 1	Express Employees Sick Benefit Association, Railway Express Agency, Inc., New York City Department, Constitution and Bylaws, 1932
Box 5, Folder 1	Agreement Governing Hours of Service and Working Conditions between the Railway Express Agency and Employees Thereof. (Both Represented by the Brotherhood of Railway and Steamship Clerks, Freight Handlers, Express and Station Employees), September 1, 1949; and Effective January 1, 1967
Box 5, Folder 1	Agreement Governing Hours of Service and Working Conditions Between the Railway Express Agency and Employees Thereof. (Represented by the Brotherhood of Teamsters, Chauffeurs, Warehousemen, & Helpers of America), January 1, 1963
Box 5, Folder 1	Constitution and Statutes of the Brotherhood of Railway and Steamship Clerks, Freight Handlers, Express and Station Employees, July 1, 1963
	<p>Handbook for Railway Express Employees, 1953? Image(s): Handbook for Railway Express Employees, (1953?)</p> <p>Handbook for Railway Express Employees [booklet], Circa 1953 1 Item (Ink on paper.; 7.9" x 5.7") Collector: Karl, Roger F. R. Author: Railway Express Agency. Language: English. Notes: AC0260-0000002 (AC scan no.) In box 5, folder 2. Topic: Employees -- Training of Genre/Form: Booklets</p>
Box 5, Folder 2	Manual of Hiring Procedures, Department of Personnel. (Two copies), October 1, 1954
Box 5, Folder 2	Supervisory Employee Performance Review Guide, Personnel Department, January 1, 1956
Box 5, Folder 2	Hotel Directory, For Personnel Required to Travel on Company Business, Issued by Department of Personnel, January 1, 1958
Box 5, Folder 3	Management Fundamentals, Management and Organization, Personnel Management Books 1 through 8, September 22, 1955 to January 5, 1956
Box 5, Folder 4	Management Fundamentals, Books 9 through 14, January 19, 1956 to April 26, 1956

Box 5, Folder 5	Management Fundamentals, Books 15 through 19, May 10, 1956 to July 26, 1956
Box 5, Folder 6	Miscellaneous material on Training Fundamentals, Loss and Damage Prevention, and Safety, June 1960
Box 5, Folder 6	Miscellaneous printed material related to Loss & Damage Prevention; Instructions for Sealing Baggage Shipments; Form for Check List for Safety Committee, Bulletin No. 3, In the Rare Event of a Damage or Loss Claim; Joint Circular Letter on Instructions for Sealing Baggage Shipments, May 1954; September 1959
Box 10	American Express Company Register of Salaries, 1864-1879

[Return to Table of Contents](#)

Series 6: Schedules and Routes, 1929-1967

Box 6, Folder 1	Alphabetical and Numerical Lists of Established Through Cars and Trunks, 3rd Edition, August 2, 1929; 7th Edition, November 1, 1931; and 10th Edition, Issued March 1, 1956, August 2, 1929; November 1, 1931; March 1, 1956
Box 6, Folder 2	Official Directory, List of Offices with Block Location and Schedule of First and Second Class Express Rates, Eighth Edition, June 1, 1933; & Twelfth Edition (Includes Superintendents & Claim Agents) January 20, 1953, June 1, 1933; January 20, 1953
Box 6, Folder 3	Directory of Offices & Communities Served, May 1, 1963
Box 6, Folder 4	"Rail Assorting Guide for Greater New York," January 10, 1933; April 1, 1946; and April 1, 1944
Box 6, Folder 4	Supplement to Assorting Guide for Greater New York—Changes for the States of Oklahoma and Texas, January 3, 1950
Box 6, Folder 5	"Questions and Answers Relating to Car Space Instructions," General Manager, Transportation, July 1, 1960
Box 6, Folder 5	Directory of Train Service Central Region, April 26, 1964
Box 6, Folder 6	Street Guide for the Borough of Brooklyn and Part of the Borough of Queens, June 1948
Box 6, Folder 6	Motor Truck and Bus Schedules Southwestern Div Central Reg., " St. Louis, Missouri, November 1, 1963

Air Routing Guide Book, June 1, 1964

Box 6, Folder 6

Box 6, Folder 6	Supplement No. 2 To Directory Over The Road Truck Services Index. (Loose-leaf pages), December 1, 1967
Box 6, Folder 6	REA Express Line Haul Services Local Rout Guide Los Angeles, California, undated
Box 7, Folder 1	Directory Eastern Departments Train Service, Issued by Transportation Department New York, Issue No. 24, September 29, 1940

Box 7, Folder 2

Routing Guide for Hub System VIA Zip Code

[Return to Table of Contents](#)

Series 7: Rates, Rules, and Regulations, 1860-1962

Box 8, Folder 1	Digest of Changes, Named in Supplement No. 31, To Official Express Classification No. 33, I.C.C. No. 4500, Traffic Department, June 28, 1949., August 10, 1949
Box 8, Folder 1	Digest of Changes, named in Supplement No. 32 to Official Express Classifications No. 33, I.C.C. No. 4500, August 1, 1949, September 9, 1949
Box 8, Folder 1	Postponement Supplement no. 23 to Official Express Classification No. 34, December 26, 1950
Box 8, Folder 1	Traffic Department Circular No. 27, May 29, 1950
Box 8, Folder 1	Traffic Department Circular No. 28, May 29, 1950
Box 8, Folder 1	Traffic Department Circular No. 29, June 7, 1950
Box 8, Folder 1	Traffic Rules and Instructions, General Circular No. 10 D, October 1, 1950
Box 8, Folder 1	Monthly Supplement to Traffic Department Circular No. 23, April 20, 1953
Box 8, Folder 1	Traffic Department Quote and Offer to the United States Government, I.C.C. No. 10, Section 22 Quotation No. 11, January 1, 1960
Box 8, Folder 2	Special Supplement to Tariffs, Increases (Two Copies), September 1, 1959
Box 8, Folder 3	Official Express Classification 36 Containing Ratings, and Regulations, March 1, 1956
Box 8, Folder 3	Supplement 19 to Official Express Classification 36, effective September 1, 1959; also Supplement 20 effective November 19, 1959; Supplement 21 effective December 15, 1959; Supplement 25 effective February 23, 1961; and Supplement 34 effective March 30, 1962, September 1, 1959; November 19, 1959; December 15, 1959; February 23, 1961; March 30, 1962
Box 8, Folder 4	Local and Joint Tariff No. 16 Containing Interstate and Intrastate Rates and Charges on Import and Export Traffic Applying on Ordinary Merchandise, March 25, 1957
Box 8, Folder 4	Commodity Tariff No. 18 Containing Local and Joint Interstate Rates and Charges Applying on Drugs, Hosiery, Medicines, Shoes and other Footwear, Toilet Preparations, Wearing Apparel and Articles of Merchandise, effective May 8, 1957 (Two Copies); Commodity Tariff No. 23.A (Cancels 23) effective January 11, 1960; Supplement 35 to Commodity Tariff No. 18 Applying on Miscellaneous Merchandise effective January 17, 1860; Supplement 36 to Commodity Tariff No. 18 Applying on Miscellaneous Merchandise effective February 7, 1960; Supplement 38 to Commodity Tariff No. 18 Applying on Miscellaneous Merchandise effective May 1,

	1960, May 8, 1957;January 11, 1960;January 17, 1860;February 7, 1960;May 1, 1960
Box 8, Folder 5	Local and Joint Schedule of First and Second Class Express Rates 18 C, June 6, 1960
Box 8, Folder 6	Commodity Tariff No. 33, Local and Joint Interstate and Intrastate Rates and Charges applying on Automobile Parts, Truck or Trailer Parts, June 14, 1960
Box 8, Folder 6	Supplement 20 to Local and Joint Tariff No. 16 Import and Export Traffic applying on Ordinary Merchandise, March 28, 1961
Box 8, Folder 6	Special Additional Charge Supplement Applying on Interstate Traffic also Intrastate Express Traffic, January 5, 1961;February 8, 1962;March 5, 1962

[Return to Table of Contents](#)

Series 8: Notebook—Bulletins and Circulars, 1929-1958

Box 9, Folder 1	Prevention Bulletin No. 9, Warning! Do Not Drop or Crush Cut Flowers. Keep From Heat and Frost... Deliver Immediately!", 1956 March
Box 9, Folder 2	Prevention Bulletins; Automotive Department Circular No. 6, Effective May 1, 1951; Financial Circulars April 1, 1947 June 16, 1953; Treasury Department Circular No. 3 March 18, 1929 -- Circular No. 7A New York March 23rd, 1934; Travel Circular No.1, March 25, 1950; Operations and Accounting Joint Circular Accounting Division No. 145, New York, N.Y. February 10,1958; Miscellaneous Joint Circulars and Instructions, 1929-1958

[Return to Table of Contents](#)

Series 9: Drawings, 1873-1970

Map-folder 1	Office and vehicle equipment standards for uniformity of equipment and buildings, 1947
Map-folder 1	Interior Longitudinal view (elevations), Gary, Indiana, 1904-11-06
Map-folder 1	Wells Fargo and Company Express, freight office, West Orange, New Jersey, circa 1910
Map-folder 1	Adams Express, New York New Haven and Hartford Railroad, property and track layout, 1917-12
Map-folder 1	Wells Fargo and Company Express, study for proposed technical station, Newark, New Jersey, 1917-01-16
Map-folder 1	Railway Express Agency, Baltimore and Ohio Railroad, bumper detail, Chicago, Illinois, 1956-10-17
Map-folder 1	American Express, New York Central and Hudson Railroad, station plans and elevations, Schenectady, New York, 1906-08-15
Map-folder 1	American Railway Express Company, Pennsylvania Railroad and Erie Railroad, express building plot plan, Corry, Pennsylvania, 1928-06-20
Map-folder 1	Wells Fargo and Company, depot building complete plans, Madison, Wisconsin, 1917-12-18
Map-folder 1	Wells Fargo and Company Express, freight station complete plans, Bloomfield, New Jersey, before 1917
Map-folder 1	Wells Fargo and Company Express, express depot complete plans, Rutherford, New Jersey, 1917-10-26
Map-folder 1	Wells Fargo and Company Express, office complete revision plans, Corning, New York, before 1927
Map-folder 1	Wells Fargo and Company Express, Interior Longitudinal View, freight station, Port Jervis, New York, before 1915
Map-folder 1	American Express Company, Michigan Central Railroad, warehouse and office building, Bay City, Michigan, 1911-11-02
Map-folder 1	New York, New Haven, and Hudson Railroad, general layout of tracks and structures, Bridgeport, Connecticut, 1927-01-13

Map-folder 1	American Railway Express Company, express building, Emporium, Pennsylvania, 1925-06-12
Map-folder 1	Plans of private business car Seminole, undated
Map-folder 1	Various rail car details, undated
Map-folder 1	American Express Company, Boston and Maine Railroad, office building, Salem, Massachusetts, 1917-09-25
Map-folder 1	American Express Company, New York Central and Hudson River Railroad, proposed building for freight room and office, Massena, New York, 1902-04-29
Map-folder 1	American Express Company, stable building complete plans, Manchester, New Hampshire, 1902-10
Map-folder 1	American Express Company, depot building complete plans, Oskaloosa, Iowa, 1917-11-19
Map-folder 1	American Express Company, Michigan Central Railroad, warehouse and office building complete plans, Kalamazoo, Michigan, 1911-11-06
Map-folder 1	American Express Company, rearrangement of office complete, Boone, Iowa, 1913-04-02
Map-folder 1	American Railway Express Company, Illinois Central Railway, express building construction plans, Murphysboro, Illinois, 1923-05-28
Map-folder 1	American Railway Express Company, express freight house construction plans, Shenandoah Junction, West Virginia,, circa 1930
Map-folder 1	American Railway Express Company, New York Central and St. Louis Railroad, construction plans for depot building, Conneaut, Ohio, 1923-02-06
Map-folder 1	American Railway Express Company, I.C.C.R., proposed express room, Murphysboro, Illinois, 1922-10-22
Map-folder 1	American Railway Express Company, Illinois Central Railway, plot plan and track layout, Murphysboro, Illinois, circa 1920
Map-folder 1	American Railway Express Company, Illinois Central Railway, construction plans for express depot, 1923-09-15
Map-folder 1	American Railway Express, Pennsylvania Railroad, construction plans depot building, Barberton, Ohio, 1922-06
Map-folder 1	American Railway Express, proposed building, Middleboro, Massachusetts, 1919-01-15

Map-folder 1	Railway Express Agency, Walnut Street Station, plan view, train robbery, Nutley, New Jersey, 1936-04-17
Map-folder 1	Railway Express Agency, office plan, Crown Point, Indiana, circa 1935
Map-folder 1	American Railway Express, depot construction plans, Lebanon, New Hampshire, 1926-08-17
Map-folder 1	Adams Express, express building, North Adams, Massachusetts, 1886-08-26
Map-folder 1	American Railway Express, C & E I. Railway, proposed express building, 1922-12-14
Map-folder 2	American Express Company, construction plans for freight house, office and stable, Chicago, Illinois, 1872
Map-folder 2	Wells Fargo and Company Express, construction plans for stable, Newark, New Jersey, circa 1900
Map-folder 2	American Railway Express, construction plans for express building, Beardstown, Illinois, 1923-09-15
Map-folder 2	American Railway Express, Lehigh Valley Railroad, property and track plan layout, Wilkes-Barre, Pennsylvania, 1921-08-30
Map-folder 2	American Railway Express, Lehigh Valley Railroad, construction and renovation plans and freight house, Wilkes-Barre, Pennsylvania, 1921, 1916
Map-folder 2	Railway Express Agency, proposed second floor plan, Jacksonville, Florida, 1933-12-12
Map-folder 2	American Express Company, New York Central and Hudson River Railroad, construction plans for express building, Amsterdam, New York, 1917
Map-folder 2	American Express Company, New York Central and Hudson River Railroad, construction plans for express building, Mt. Kisco, New York, 1906, 1910
Map-folder 2	American Express Company, construction plans for express building and stables, Ogdensburg, New York, 1905
Map-folder 2	American Express Company, rearrangement and refitting of office, Ogdensburg, New York, 1905
Map-folder 4	American Railway Express Company, new construction, proposals, additions, and renovations, Seaboard Air Line Railroad, Portsmouth, Virginia, 1924-1945
Map-folder 4	Railway Express Agency, brick office and warehouse, Appalachia, Virginia, 1930-1931

Map-folder 4	American Railway Express Company, construction plan, New Martinsville, West Virginia, 1926-12-17
Map-folder 4	Railway Express Agency, warehouse addition, Ann Arbor, Michigan, 1958-09-22
Map-folder 4	American Railway Express Company, facility plan and elevations, Canadian and United States interchange point, Rouses Point, New York, 1926-11-16
Map-folder 4	American Railway Express Company, alterations and repairs, Cairo, Illinois, 1926-01-08 Notes: Includes train employee time record and payroll records.
Map-folder 4	Railway Express Agency, office building and auto repair room, Grand Trunk Railroad system, Pontiac, Michigan, 1948-02-03
Map-folder 4	National Express Company, office plans, elevations and details, Pontiac, Michigan, 1916-08 Notes: Includes gas outlets at public desk and cashier desks for sealing money envelopes and valuable packages.
Map-folder 4	National Express Company, depot building, Grand Trunk Railroad, Pontiac, Michigan, 1917-08-18
Map-folder 4	American Railway Express Company, construction plans, depot building, P.C.C & St. Louis Railroad, Dennison, Ohio, 1924-05-03
Map-folder 4	American Railway Express Company, construction plans, depot building, Galion, Ohio, 1927-05-07
Map-folder 4	American Railway Express Company, new express building, Princeton, West Virginia, 1923-10-01
Map-folder 4	Wells Fargo and Company Express, addition to railroad station, Milan, Michigan, 1912-11-13
Map-folder 4	American Railway Express Company, main floor plans, station, New York Central and Hudson River Railroad, Auburn, New York, circa 1900
Map-folder 4	American Railway Express Company, proposed new depot, Boston and Main Railroad, Waltham, Massachusetts, 1922-06-06
Map-folder 5	Adams Express Company, express building, Bridgeport, Connecticut, 1904-05
Map-folder 5	Adams Express Company, Chicago, Burlington and Quincy Railroad, Chicago, Illinois, express building and track layout, Chicago, Illinois, 1910-07-02
Map-folder 5	Railway Express Agency, detail of office fixtures, Attleboro, Massachusetts, 1934-06

Map-folder 5	American Railway Express, New York Central Railroad, refrigerator building, Antwerp, New York, circa 1920
Map-folder 5	Chicago and N.W. Railway, detail of station front elevations, Beloit, Wisconsin, 1900-02-03
Map-folder 5	St. Louis Brownsville and Mexico Railway, standard combination depot # 2, building plans, circa 1920
Map-folder 5	Southern Express Company Building, ACL Railway, Arcadia, Florida, 1910-11
Map-folder 5	Southern Express Company, stable building, Jacksonville, Florida, circa 1910
Map-folder 5	Wells Fargo and Company Express, freight station, Montclair, New Jersey, circa 1910
Map-folder 5	Railway Express Agency, New York Central Railroad, freight house floor plans and elevations, Scarsdale, New York, 1956-03-05
Map-folder 6	National Express Company, plans, station and office building, C & A Railroad, Bloomington, Illinois, 1913
Map-folder 6	American Railway Express, proposed building and layout, Middleboro, Massachusetts, 1918-11-20
Map-folder 6	American Express Company, construction plans of office building, Boston and Albany Railroad, Newton, Massachusetts, 1917-09-22
Map-folder 6	Southern Express Company, Southern Railway System, construction plans and track layout, Chester, South Carolina, 1910, 1938
Map-folder 6	American Express Company, construction plans, freight transfer house, Galena, Illinois, 1903
Map-folder 6	National Express Company, D & H Railroad, construction plans express building, Albany, New York, 1904-05-01
Map-folder 6	Railway Express Agency, portable billing desk, Atlanta, Georgia, 1941-02-27
Map-folder 6	American Express Company, construction plans for stable, Indianapolis, Indiana, 1873-1874
Map-folder 6	American Express Company, property survey, Albany, New York, circa 1890
Map-folder 6	American Railway Express Company, construction plans express office and freight room, Kendallville, Indiana, 1922-05

Map-folder 6	American Express Company, alterations in depot building, Union City, Indiana, 1917-04-24
Map-folder 7	American Express Company, construction plans, Cleveland , Ohio, 1910
Map-folder 7	American Express Company, office and railroad depot, floor plans and details, Auburn, New York, 1901-07-31
Map-folder 7	American Express Company, floor plans of four story stable, South Boston, Massachusetts, 1902
Map-folder 7	American Express Company, plans of office and freight house, Cairo, Illinois, 1904
Map-folder 7	Freight House, Adams Express, Long Island Railroad, Riverhead, New York, 1910-05-06
Map-folder 3	Railway Express Agency (REA) logos, undated
Map-folder 3	Railway Express Agency, Missouri-Kansas-Texas Railroad Company, Brookshire, Texas station elevations, 1969
Map-folder 3	Railway Express Agency,, New York Central Railroad, station elevations, Massena, New York, 1969
Map-folder 3	Village of Boston photographs of buildings, undated
Map-folder 3	Railway Express Agency, train robbery, Nutley, New Jersey, 1936-04-17
Map-folder 3	Railway Express Agency, Board of Directors chart, 1955-11-01-1955
Map-folder 3	Railway Express Agency, organization chart, 1943-08-01
Map-folder 3	United States Express Company map, 1887
Map-folder 3	Adams Express Company map, 1914
Map-folder 3	Wells Fargo Express Company map, 1912
Map-folder 3	Central Overland califronia and Pikes peak Express Company Pony Express Route map for 1860-1861, undated
Map-folder 3	Various minor express companies map, undated
Map-folder 3	Southern Express Company map, 1916
Map-folder 3	American Express Company map, 1914

Map-folder 3	National Express Company map, 1916
Map-folder 3	American Railway Express Company map, 1918
Map-folder 3	Pacific Express Company and Mississippi Valley Express Company, 1880
Map-folder 3	REA Express map, 1969
Map-folder 3	REA Express operating regions map, 1970

[Return to Table of Contents](#)